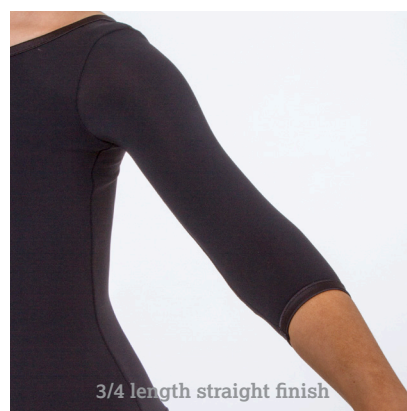


Piper juvenile dress Premium made to order



USA100 Piper Juvenile Dress

Our beautiful Piper Dress has a stunning V shaped body with a scoop neck, v back and a small satin trim.

With this style of dress you can choose your choice of sleeves from, sleeveless to cap sleeve, ¾ length or full length.

Sleeves will come with a small satin trim to match the neckline.

Easy pull on dress, with a full circular skirt and a roll hem to finish.

Ballroom £180.00 Latin £160.00
Please note prices are in GBP.

Available in all DSI Crepe colours

Sizes: 5-6, 7-8, 9-10, 11-12, 13-14

If you would like a standard size please see our measurement chart on page 9.

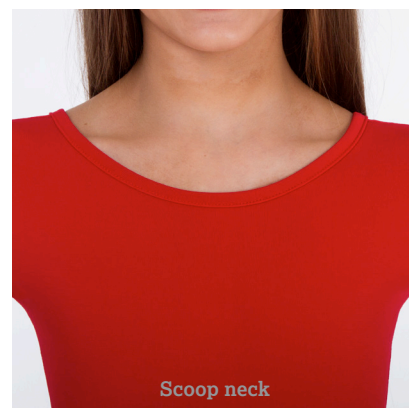
Alternatively you can order made to measure for an extra £45.00.

Please fill out our Girls Premium Couture measurement chart available on our website.

To place your order or to make an enquiry please contact Shannon@dsi-london.com
All juvenile wear is non-refundable, however this does not affect your statutory rights.



Kayleigh dress Premium made to order



USA150 Kayleigh Juvenile Dress

Drop waisted crepe dress with an elegant cap sleeve, scoop neck front and back and ruched hip detail.

Panelled skirt with a simple roll hem finish.

Easy pull on dress, no zip.

With this style of dress you can choose your choice of sleeves from, sleeveless to cap sleeve, $\frac{3}{4}$ length or full length.

Ballroom £215.00 Latin £180.00

Please note prices are in GBP.

Available in all DSI Crepe colours

Sizes: 5-6, 7-8, 9-10, 11-12, 13-14

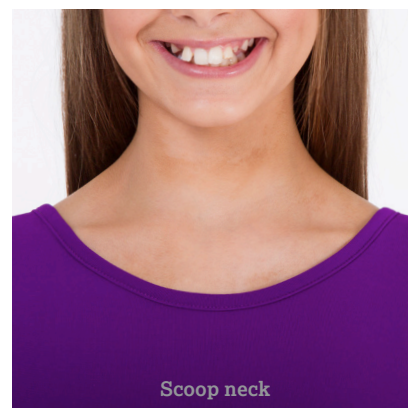
If you would like a standard size please see our measurement chart on page 9.

Alternatively you can order made to measure for an extra £45.00.

Please fill out our Girls Premium Couture measurement chart available on our website.

To place your order or to make an enquiry please contact Shannon@dsi-london.com
All juvenile wear is non-refundable, however this does not affect your statutory rights.

Ella Latin dress Premium made to order



USA200 Ella Latin Juvenile Dress

Dropped waistline with a scoop neck front and back, ¾ length crepe sleeves with a straight finish and a roll hem.

Easy pull on dress, no zip.

With this style of dress you can choose your choice of sleeves from, sleeveless to cap sleeve, ¾ length or full length.

Latin £160.00

Please note prices are in GBP.

Available in all DSI Crepe colours

Sizes: 5-6, 7-8, 9-10, 11-12, 13-14

If you would like a standard size please see our measurement chart on page 9.

Alternatively you can order made to measure for an extra £45.00.

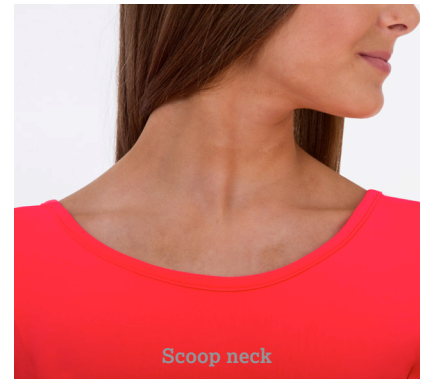
Please fill out our Girls Premium Couture measurement chart available on our website.

To place your order or to make an enquiry please contact Shannon@dsi-london.com
All juvenile wear is non-refundable, however this does not affect your statutory rights.

Ella Ballroom dress Premium made to order



USA250



USA250 Ella Ballroom Juvenile Dress

Drop waisted crepe dress with an elegant cap sleeve, scoop neck front and back and ruched hip detail.

Panelled skirt with a simple roll hem finish.

Easy pull on dress, no zip.

With this style of dress you can choose your choice of sleeves from, sleeveless to cap sleeve, $\frac{3}{4}$ length or full length.

Ballroom £199.00

Please note prices are in GBP.

Available in all DSI Crepe colours

Sizes: 5-6, 7-8, 9-10, 11-12, 13-14

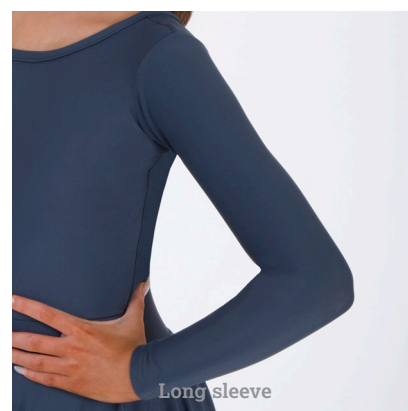
If you would like a standard size please see our measurement chart on page 9.

Alternatively you can order made to measure for an extra £45.00.

Please fill out our Girls Premium Couture measurement chart available on our website.

To place your order or to make an enquiry please contact Shannon@dsi-london.com
All juvenile wear is non-refundable, however this does not affect your statutory rights.

Hayley leotard Classic range



USA350 Harley Leotard

Available in all lycra colours.

Scoop neck front and back with long lycra sleeves.

Easy pull on leotard.

Designs cannot be altered

£40.00

Please note prices are in GBP.

Available in all DSI Lycra colours

Sizes: 5-6, 7-8, 9-10, 11-12, 13-14

Please see measurement chart on page 9.

To place your order or to make an enquiry please contact Shannon@dsi-london.com
All juvenile wear is non-refundable, however this does not affect your statutory rights.



Henny skirt Classic range



USA400 Henny Juvenile Skirt

Available in all lycra colours.
Full circular skirt and a roll hem finish.
Easy hook and bar fastening
Designs cannot be altered.

Ballroom £72.50

Latin £62.50

Please note prices are in GBP.

Available in all DSI Lycra colours

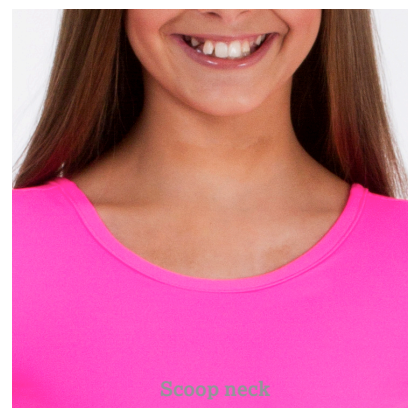
Sizes: 5-6, 7-8, 9-10, 11-12, 13-14

Finish length is made to a standard size.

Please see measurement chart on page 9.

To place your order or to make an enquiry
please contact Shannon@dsi-london.com
All juvenile wear is non-refundable, however
this does not affect your statutory rights.

Heidi dress Classic range



Scoop neck



Low scoop back



long sleeve straight finish

USA300 Heidi Juvenile Dress

Available in all lycra colours.

Scoop neck front and back with long lycra sleeves, a full circular skirt and a roll hem finish.

Easy pull on dress.

Designs cannot be altered.

Ballroom £99.00

Latin £80.00

Please note prices are in GBP.

Available in all DSI Lycra colours

Sizes: 5-6, 7-8, 9-10, 11-12, 13-14

Finish length is made to a standard size.

Please see measurement chart on page 9.

To place your order or to make an enquiry

please contact Shannon@dsi-london.com

All juvenile wear is non-refundable, however this does not affect your statutory rights.



Measurement charts

JUVENILE TROUSERS Sizes are approximate

AGE	6	7	8	9	10	11	12	13
WAIST	58cm	60cm	61cm	63cm	65cm	67cm	69cm	71cm
HIP	64cm	67cm	70cm	73cm	76cm	79cm	82cm	85cm
THIGH	43cm	40cm	44cm	47cm	50cm	53cm	56cm	59cm
INSIDE LEG	52cm	55cm	59cm	61cm	65cm	68cm	71cm	74cm

JUVENILE SHIRTS Sizes are approximate

AGE	5/6	7/8	9/10	11/12	13/14
CHEST	60cm	66cm	72cm	78cm	85cm
WAIST	57cm	61cm	65cm	69cm	73cm
HIP	63cm	78cm	75cm	81cm	87cm
SLEEVE LENGTH	41cm	45cm	51cm	56cm	61cm
COLLAR	27cm	30cm	31cm	33cm	36cm

JUVENILE DRESSES Sizes are approximate

AGE	5/6	7/8	9/10	11/12	13/14
CHEST	60cm	65cm	71cm	77cm	85cm
WAIST	56cm	59cm	62cm	64cm	66cm
HIPS	63cm	70cm	76cm	83cm	90cm
SLEEVE LENGTH	41cm	46cm	51cm	55cm	57cm
BICEP	19cm	20cm	22cm	23cm	25cm
BODY LENGTH	106cm	114cm	122cm	132cm	137cm

Measurements can vary depending on the fabric.

Latin, Ballroom and Sequence dress lengths are taken from the nape to the hemline of the skirt.

*All skirt lengths are taken from the top of the waistband to the hemline.



Collar

Measure around the base of the neck where the collar sits

Chest

Measure the chest at the fullest part, placing the tape close up under the arms

Sleeve Length

Measure from the shoulder joint to the cuff

Bicep

Measure around the largest part of the upper arm

Waist

Measure the natural waistline

Hip

Measure at the fullest part around the bottom

Body Length

Measure from the side of your neck passing the tape between the legs and back up to the same point.

Thigh

Measure the circumference of your thigh

Inside Leg

Measure from the crutch to where your trouser is normally worn

Skirt Length

Measure from the nape of neck at back to finished skirt length and measure from top of waistband to hem also.





Boys Competition Shirt & Trouser Premium made to order



USA450 Lycra Competition Shirt with a zip
White Lycra, Zip fastening, Cufflink hole
New and improved collar.
Sizes: 5-14yrs

£70.00
Please note prices are in GBP.

Standard sizes come un-hemmed, binding included.

Please see measurement chart on page 9.

To place your order or to make an enquiry please contact Shannon@dsi-london.com
All juvenile wear is non-refundable, however this does not affect your statutory rights.

Alternatively you can order made to measure for an extra £20.00(Shirt) £30.00(Trouser).
Please fill out our Boys Premium Couture measurement chart available on our website.

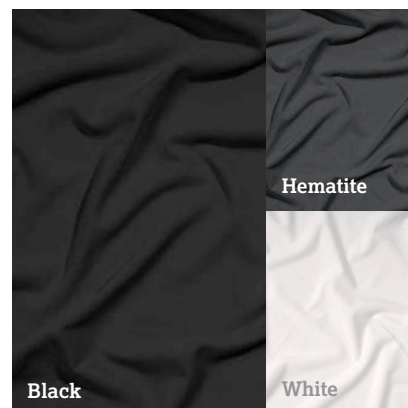
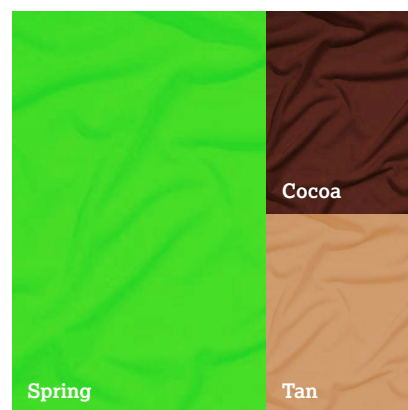
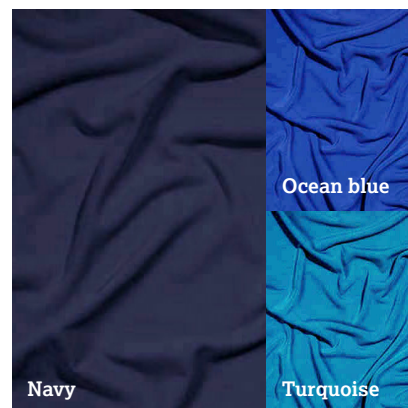


USA500 Boys Plain Trouser
Made in our Black Madrid stretch gabardine.
with a 1.5" waistband
Sizes: 5-14yrs

£70.00
Please note prices are in GBP.

Crepe

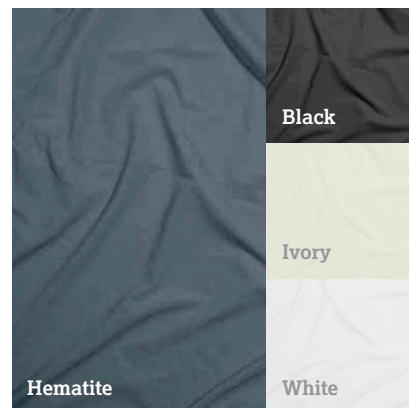
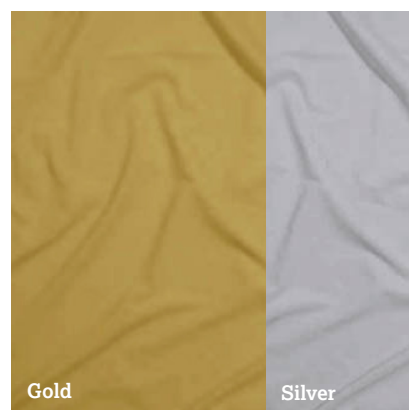
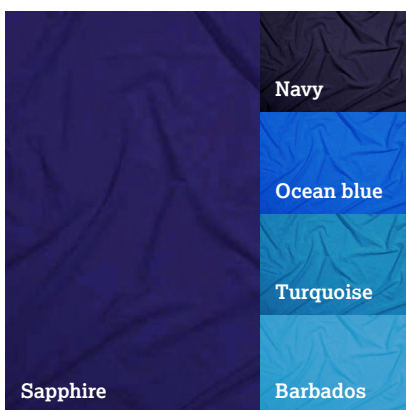
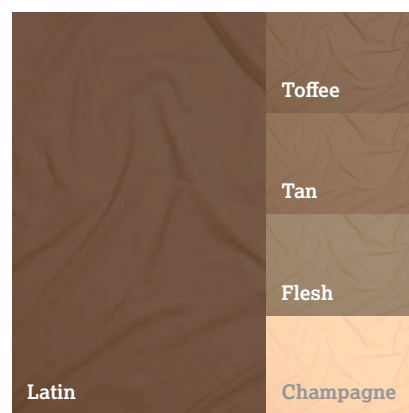
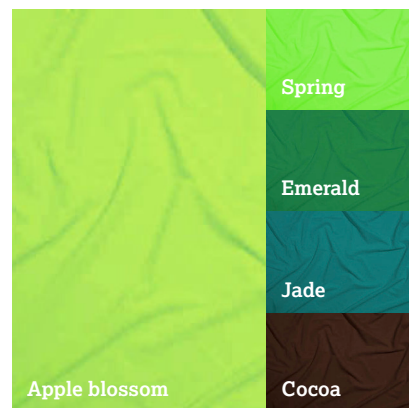
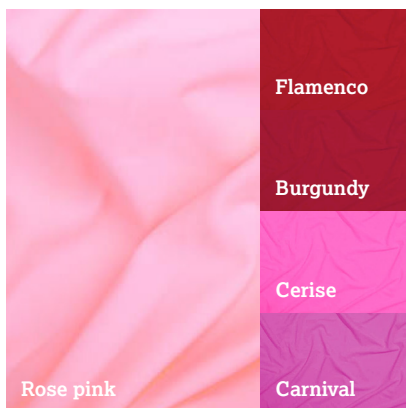
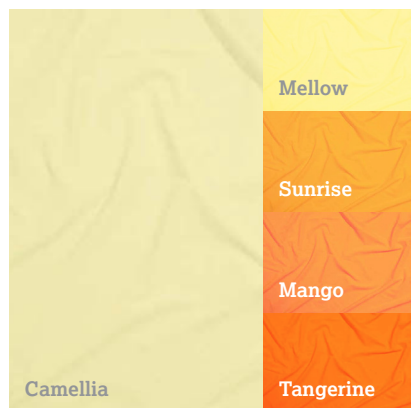
We are proud that the DSI Crepe is the only authentic crepe in the Dance market and the difference shows. Our commitment to providing simply the very best in Italian crepe has brought only joy to our customers who appreciate the drape, the softness and the flowing movement that only the finest original crepe can provide. Beautiful to work with and ethereal in its effect there is no comparison with inferior copies. Revel in the range of colours and enhance your performance with the ultimate for the discerning dancer.



1150 Crepe

Aqua, Black, Burgundy, Cerise, Cocoa, Coral, Flame red, Flamenco, Hawaiian pink, Hematite, Lime, Navy, Ocean blue, Peppermint, Purple, Rose pink, Sapphire, Scarlet, Spring, Sunrise, Tan, Tangerine, Turquoise, White
Width: 140cm
100% Nylon

Lycra



1203 Lycra
Available in all DSI colours
Width: 140cm
80% Polyester 20% Elastane

**#DSI-LONDON.
COM/DESIGNED
TOPERFORM/
MADEINLONDON**